

# The Bulletin

The Official Newsletter of the Rotary Club of Rosebud-Rye Inc. District 9820

Club number 18422

Chartered 26th May 1955

Volume 60 No. 24

01-03-2016



**President: Elizabeth Wilson**  
**Tel. 0458 994077**  
[pres.rosebudrye@hotmail.com](mailto:pres.rosebudrye@hotmail.com)



District Governor: **Merv Williams**  
District Gov. Elect: **Lyn Westland**  
District Gov. Nom: **Don Ripper**  
Assistant Gov.: **Linda Morris**



**K.R. "Ravi" Ravindran**  
President  
Rotary International

**Hamish McGillivray** was guest speaker at the meeting on February 23.

The club sponsored Hamish to be a resident student at the two week University of Melbourne Summer School.

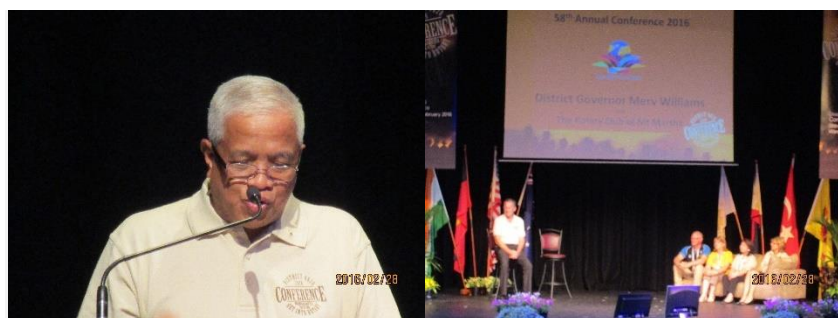
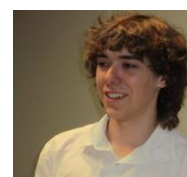
Hamish, who suffers from allergies, was home schooled until he completed year 11 on-line.

At the summer school he learned about subjects he was considering for year 12, was tutored by volunteer university students and participated in a wide range of activities. Hamish found it refreshing to meet people his age who wanted to learn, and made good friends.

When he finishes his studies he wants to make money, possibly as a market analyst or an actuary.

Among his interests are equestrian vaulting, circus and ballroom dancing, and he is a volunteer with the Riding for the Disabled Association.

Zoe Sterling



**Rotary District 9820 Conference-reports in next Bulletin**

- Clockwise from top Left:
- Welcome performance by Wangaratta High School Band;
  - Neil reporting on the Bike Ride;
  - Exchange students listening with rapt attention to Neil extolling their performances!
  - District Governor Merv Williams opening the Conference;
  - Rotary International President's Personal Representative, Angelino Colona



## What's fishy this week?

Perhaps the fact that the exchange students could still sit after (reportedly) having ridden 600km in 6 days !!??!!!!

### Weekly Meeting Roster

| Duty                     | 1 March                          | 8 March   | 15 March        | 22 March  | 29 March              |
|--------------------------|----------------------------------|---|-----------------|---|-----------------------|
| <b>Toast</b>             | Heather Barton                   | Judy Phelan   | Barbara English | <b>Breakfast Meeting at Blue Mini</b>   | <b>Social Evening</b> |
| <b>Joke</b>              | Pat Sansonetti                   | Heather Barton  | Mandy Clarke    |   |                       |
| <b>Reports</b>           | All                              | All   | All             |   |                       |
| <b>Introduce speaker</b> | Mandy Clarke                     | Neil Stitt  |                 | Heather Barton  |                       |
| <b>Guest Speaker</b>     | Neil, Camilla, Gun, Brian, Libby | Steve Bastoni   | Club Meeting    | Winston Marsh<br>"The Marketing Guru"   |                       |
| <b>Subject</b>           | Report on District Conference    | Evolution of the Film Festival & community activities | Board Meeting   | "How to generate people desperate to buy without using social media or spending money!" |                       |
| <b>Response</b>          | -                                | Lee Stanford  |                 |   |                       |
| <b>Joker's Wild</b>      | Pat Sansonetti                   | Pat Sansonetti  | Pat Sansonetti  | Pat Sansonetti  |                       |
| <b>Cashier</b>           | Claire Burns                     | Barry Osborne   |                 | Mandy Clarke  |                       |
| <b>Guest Liaison</b>     | Barbara English                  | Gun Davenport   | Barry Osborne   | Judy Phelan   |                       |

### Other Coming Events and Visits

**Saturday 5 March: Rye Foreshore Market**

**Sunday 6 March: Neighbour Day: 10am to 2pm at Vern Wright Reserve, Rosebud West**

**Sunday 13 March: 11am to 5pm: Kite Festival on Rosebud Foreshore**

**Parking 7.30am to 6.30pm**

**Wednesday 22 March: Breakfast Meeting:**

Secretary: [sec.rosebudrye@bigpond.com](mailto:sec.rosebudrye@bigpond.com) Post P.O Box 167 Rosebud Vic 3939

We meet at 6 for 6.30pm each Tuesday at the Rosebud Country Club, 207 Boneo Road, Rosebud.

Melways 170 C6 –Alternative venues are used about once per month.

Please check our website for changes to our meeting venue

Apologies and visitors. Please email the secretary or call 59866505 by noon on the day of the meeting