



Annual Report

RCRR Enterprises Ltd

2023-2024



26 Henry Wilson Drive,
Rosebud VIC 3939
www.rosebudryerotary.org.au
(03) 5986 8896

The year in review



Paul Mee, Chairman

It is an honour to provide a chairman's report for RCRR Enterprises Limited as at 30 June, 2024. This is a successful registered company and charity owned the Rotary Club of Rosebud Rye Incorporated.

The Objectives and Mission of RCRR Enterprises Ltd, in its capacity as a charity, is to consider and if appropriate, approve grant applications and donations to various local, regional, and national entities, to achieve outcomes as set out in the box below.

The main revenue for the company is from the operations of the Rotary Warehouse retail business conducted at 26 Henry Wilson Drive, Rosebud and from July 2023 the Rotary Op Shop business at Unit 2, 1395 Point Nepean Road conducted on leased premises adjacent to the Rosebud Plaza. The 'Warehouse' property is leased from the Rotary Club of Rosebud-Rye Inc. and is open 7 days per week (the 'Op Shop' premises is rented under a commercial agreement from independent owners).



Advance Health

Advance Education

*Advance Social or
Public Welfare*

Advance Culture

Promote reconciliation, mutual respect, and tolerance between groups of individuals that are in Australia

Promote or protect human rights

Provide other similar purpose 'beneficial to the general public.'



cont'd.

The Board of RCRR Enterprises Ltd, comprising: Chairman – Paul Mee, Vice Chair/Director – Gael Traa, Secretary/Director– Claire Burns, Treasurer/Director – Philip Hedley, and Directors Heather Barton AM, Bernard Wong, and Barry Irving OAM. Elizabeth Wilson is an ex-officio Board Director and General Manager. (Since Oct 2023, Gael Traa has been Acting Secretary).

It is with pleasure, that I report another successful year for the company. During the 12 months period to 30th June 2024, the Rotary Warehouse business, the Rotary Op-Shop, and the company have performed, very well, yielding strong net returns. The company has achieved a sound net financial surplus and has sound balance sheet equity as at 30th June 2024. Please refer to the accompanying audited financial statements for the full details.

This success would not be achieved without the professional leadership and passionate commitment of our Rotary Warehouse and Rotary Op-Shop General Manager Elizabeth (Libby) Wilson. We should also thank Treasurer Philip Hedley, banking officer Bernard Wong, our Administration Officer Sandi Kenny-Row, and our **wonderful volunteers**. The Warehouse business is a fantastic example of recycling and repurposing furniture and the full range of household items that in many cases would be destined for landfill. We also recycle, and sell clothing, books, and second-hand goods.

Congratulations to our dedicated warehouse volunteers led by the Warehouse Supervisors Russell, Sharon, and Ian. In addition, our Rotary Op Shop near the Rosebud Plaza, has also achieved a very good net return this year, thanks to our fabulous team of Op-Shop volunteer ladies who work regular shifts Monday to Friday, week after week.

During the past year the Rotary Warehouse has received several calls for help and happily we have been able to donate 'fridges, washing machines, furniture, and good quality second-hand goods to families in need in our local community. Our **"donations in kind"** value **exceeded \$5,000** for the year.



cont'd.

The company success has enabled us to provide **over \$106,000** this year in grants and donations to local, regional, and national community service causes. Our reach has been truly 'national' and our impact has been particularly focussed on youth and youth programs plus local schools and community service support on the Mornington Peninsula.

Recipient organisations for our grants and donations include:

- Primary Schools at Rye, Rosebud, Tootgarook, Boneo, and Eastbourne – Equipment support and student scholarships
- Rosebud Secondary College "BEAM" (Belonging, Engagement And Meaning) wellbeing and mentoring program
- Seawinds Community Hub, Capel Sound – breakfast program, and promotional support
- Australian Rotary Health – PhD medical research grants and nursing scholarships
- Donations in kind to local families – household goods and personal items
- Rosebud Police Seniors Citizens Register – support
- Rosebud Secondary College – student hardship scholarships
- Story Dogs – helping children learn to read
- Rosebud Secondary College – science equipment, science excursions, National Youth Science Forum (NYSF), leadership camps
- Rotary 'Model United Nations Assembly' (MUNA) for Year 11/12 students.
- Rotary Youth Leadership Awards camp (RYLA) – 6-day Leadership development camp for young adults 18+ yrs
- Southern Peninsula Community Support – support for homelessness

Our Rotary Club members are very proud of this successful charitable enterprise which will continue its objectives – to fund worthwhile humanitarian causes and provide relief and assistance to people in need in our community, well into the future.

With the support of Rotary Club members, our fabulous volunteers, and the community we look forward to the coming year.



Finances Report



Philip Hedley, Honorary Treasurer

The results for the year include the Opportunity Shop in Rosebud for the first time, having been transferred from Rotary Club Rosebud Rye INC.

The business achieved an operating profit for the year (before donations) of \$149,000, compared to \$111,000 last year.

Summary \$000's	2024	2023
Total Revenue	474	349
Expenses (excluding donations)	280	238
Donations	101	126
Bank Accounts – 30th June 2024	131	114
Current Assets – 30th June 2024	47	5
Current Liabilities – 30th June 2024	23	10
Equity (what we own) – 30th June 2024	158	109

RCRR Enterprises Ltd is renting the Warehouse from the Rotary Club of Rosebud-Rye Inc. on a commercial basis, at a rate of \$130,000 (excluding GST).

In closing, I would like to again thank Sandi Kenny-Row, our Admin. Manager, for her continued support and dedication.



Funding summary

\$101,000

Donated

37

Funding Submissions

22

Organisations helped

Our Why

RCRR Enterprises Ltd was formed to maximise the funds raised through our Rotary Opportunity Warehouse operations to donate to Australian community based charitable enterprises. Since then, funds raised through the Rotary Op Shop have also been included.

At the request of the members of the Rotary Club of Rosebud-Rye Inc. RCRR Enterprises Ltd was formed on 17 January 2020 as a new legal entity; the Club is the sole shareholder and owner of RCRR Enterprises.

The company was notified on 26 April 2020 by the Australian Charities and Not for Profit Commission (ACNC) that its application for Registration as a Charity was successful.



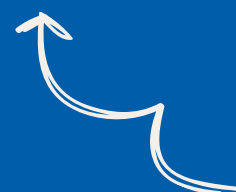
Grants and Donations given locally and nationally for the year ended 30/6/2024 (not including overseas)



Value of goods in kind donated to people in need for the year ended 30/6/2024



Op Shop and Warehouse Volunteers and Club Members who made it all possible



Directors

Board Meetings
2023/24

Paul Mee – Chairman	6/6
Philip Hedley – Treasurer	6/6
Claire Burns – Director	2/6
Bernard Wong – Director	5/6
Gael Traa – Director	5/6
Barry Irving OAM – Director	3/6
Heather Barton AM – Director	5/6
Elizabeth Wilson – Ex Officio, General Manager	6/6

Ever wondered what your support helped to achieve??

This year we've donated:

Youth \$107,411

Rye Primary School
Rosebud Primary School
Tootgarook Primary School

Boneo Primary School
Eastbourne Primary School
Rosebud Secondary College

Local Community Programs \$18,000

Seawinds Community Hub
Story Dogs

Rosebud Police Senior Citizens
Tootgarook Netball Club

International Projects \$16,600

Rotary International End Polio Now
Rotarians Against Malaria
KOSHISH Mental Health, Nepal

Morocco Earthquake Fund
Rotary Foundation

Mental Health Research \$10,000

Australian Rotary Health

Sponsorships \$7,500

Rye Junior Gift

Peninsula Film Festival

... and much more



TOGETHER, WE

TRANSFORM

We'd like to thank all our volunteers, donors and supporters for their *generous support*



It takes a team.....

This year, our reach has been truly 'national' and our impact has been particularly focussed on youth and youth programs, together with local schools and community service support on the Mornington Peninsula. None of this would have been possible without a real team effort.

Acknowledgements

Our marvellous, loyal and happy band of volunteers who share their time and skills at the Warehouse and the Op Shop

Our donors of second hand goods

Community members and supports who help us in many ways

